

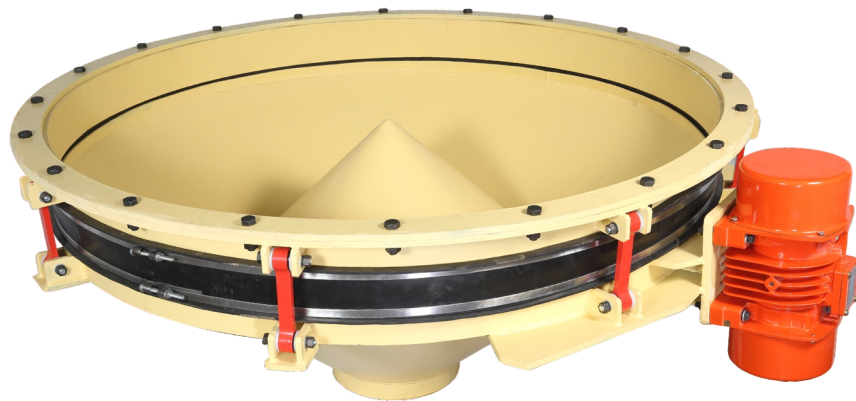
## BIN ACTIVATOR

An extremely versatile design, capable for handling all types of solid material flow problems like Bridging, Arching, Rat Holing and Flushing. Also known as Vibratory Bin Bottom, is widely used in several industries to attain a continuous and controlled flow of the material. Available in various sizes and construction material, can be availed at affordable rates.

### COMPLETE STAINLESS STEEL CONSTRUCTION



### COMPLETE MILD STEEL CONSTRUCTION



## Advantages of Bin Activator

- Continuous Flow
- Supply on Demand
- Controlled Flow
- Useful for difficult to flow materials

## Sizes available

600 mm	1500 mm
900 mm	1800 mm
1200 mm	2000 mm



## TYPICAL INSTALLATION

## Features

With various sizes to fit under silo bottoms, this unique design features a baffle cone height adjustment to maintain an annular gap ensuring consistent material flow.

A perfectly engineered connection link provides 100% elastic isolation between silo & bin, with no transmitted vibrations to silo body.

Vibrations are transmitted only to the material.

Choice of material of construction can be as per process requirement: Stainless Steel & Mild Steel.

## Application Industries

Coal | Carbon | Cement | Calcium Carbonate | Detergents | Food | Fertilizer | Flour | Glass | Iron Ore | Minerals | Mica | Polymers | Paints Pigments | Plastics | Sugar | Spices | Sand